

# MARFA 100

2023 WEEKEND GUIDE



## WEEKEND SCHEDULE

### FRIDAY, OCTOBER 13

- 5 - 8 pm 100K & 50K Check-In & Packet Pickup  
*Note, there will be no Race Day check-in!*
- 5:30-6:30pm Yoga class w/ Kristal Cuevas  
*Please register in advance*

### SATURDAY, OCTOBER 14

- 8:15 am Start area open to 100K riders
- 9:00 am 100K START!**
- 9:15 am Start area open to 50K riders
- 10:00 am 50K START!**
- 10:30-11:30am Bicycle Bonanza & Eclipse Viewing  
w/ Marfa Public Library
- 12 - 4 pm Post-Ride Party
- 3:00 pm Awards Ceremony**
- 7 - 10 pm After-Party at Planet Marfa  
*200 S Abbot St, Marfa TX 79843*

### SUNDAY, OCTOBER 15

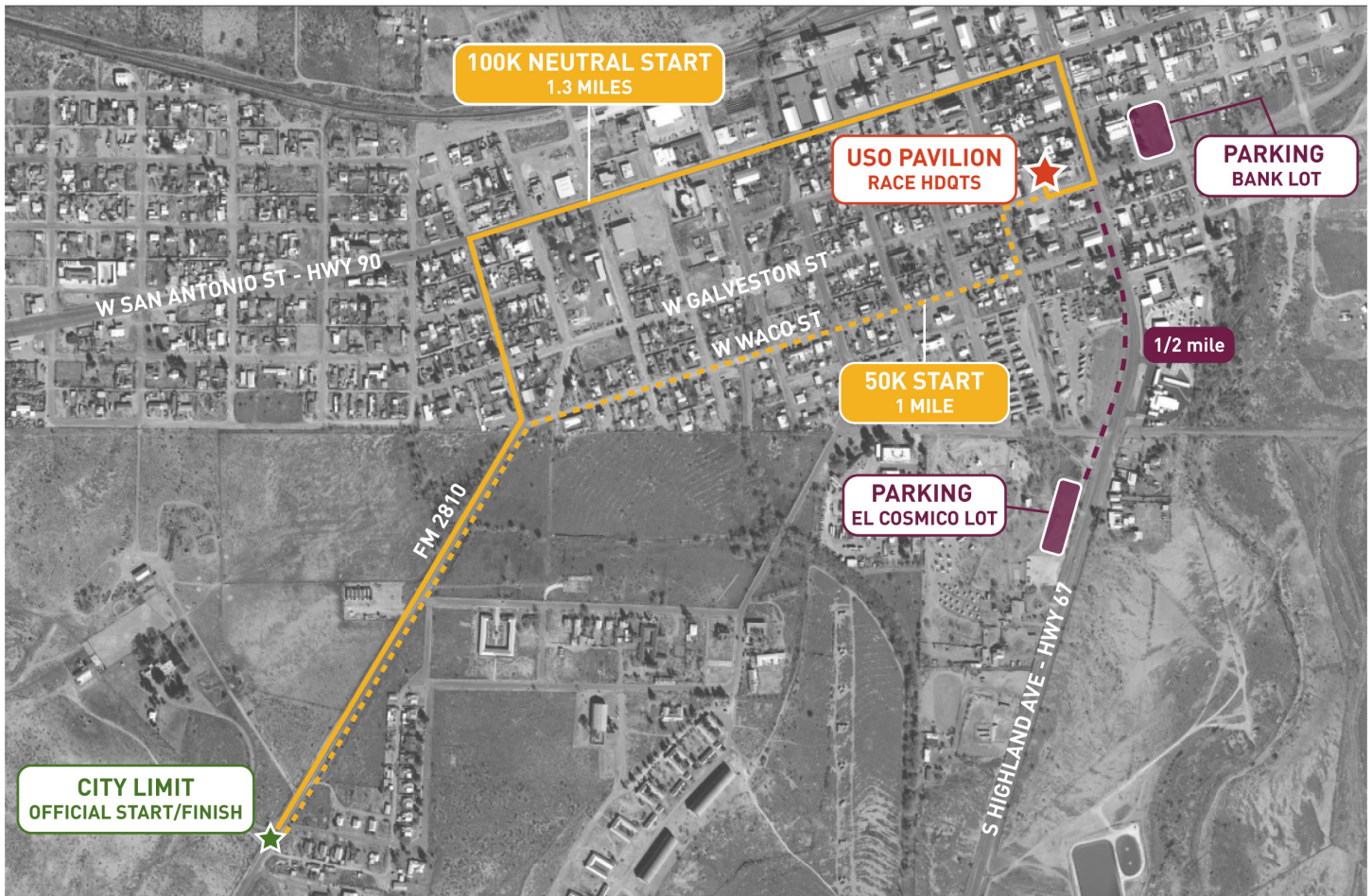
- 10:00 am Slow Ride through Marfa

All events take place at the **USO Pavilion**  
*unless otherwise noted*

302 S Highland Ave, Marfa TX 79843

The pavilion is located behind the main building on W Galveston St

# PARKING LOCATION & RACE START



## PARKING

- Marfa is only 2 square miles, please ride your bike to the race start if possible.
- If you drive please park in either of the two lots indicated on the map. We prefer if you don't park in the adjacent neighborhood if possible.
- The empty lot behind the Marfa National Bank is across the street from the USO - please use caution when crossing HWY 67

## RACE START

- Riders for both the 100K & 50K will meet at the **USO Pavilion** - 302 S Highland Ave
- A lead car will take riders to the official race start on FM 2810
- 100K chip timers will automatically start when you cross the line on FM 2810

## RACE START - USO PAVILION



### CYCLIST CORRAL

- **100K** cyclists line up on W Galveston St facing EAST starting at 8:30 - **race starts at 9am**
- **50K** cyclists line up on W Galveston St facing WEST starting at 9:30 - **ride starts at 10am**

### INFO BOOTH

Questions? Come to the info booth! The volunteers there can also help you get checked-in if you missed Friday.

### COFFEE & WATER STATION

Fill up your water bottle and grab a swig of coffee before the race. Snacks and bars will be available there as well.

### BATHROOMS & GEAR DROP

Bathrooms and Gear Drop will be located inside the USO Building. You can enter on either the south or east sides

# COURSE MAP

## Marfa 100

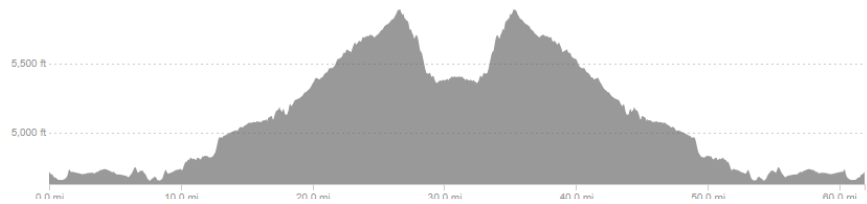
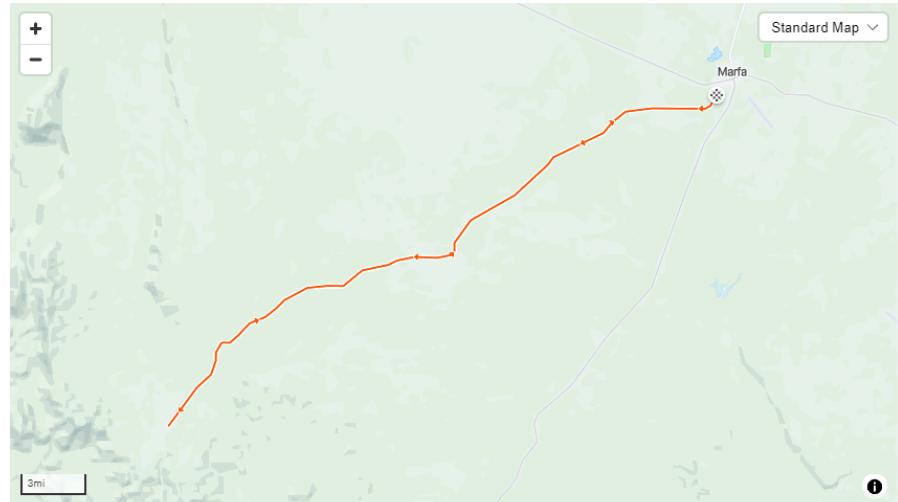
Cycling Route



### Details

📍 61.91 mi    ⚡ 2,997 ft

### Route and Elevation



## THE ROUTE

Both routes are an out-and-back. The 100K will turn around at the first aid station before turning around. The 50K will turn around at the second aid station at mile 16.

**CLICK OR SCAN BELOW TO OPEN ON STRAVA**



<https://www.strava.com/routes/3137864432089515394>

## ON THE ROAD

### AID STATIONS & SAG

- Four Aid Stations spread out along the course, located at **10 , 16, 23** and **32** mile mark
- Stocked with water, Skratch electrolyte powder, Munkpack and Wildway snacks, bike pump and limited bike tools
- Port-a-potty at 16 and 32 mile marker
- SAG cars and motorcycles will be on the course until the last rider makes it back to Marfa

### SAFETY

The road remains **OPEN TO CARS** for the duration of the event It is your responsibility to look out for cars during your ride.

- Move over to let cars pass,
- **Never** cross the centerline of the road
- Do not stop and congregate in the middle of the road

Remember: Marfa is 30 miles away from the nearest hospital - **ride safely!**



Photo by Sarah Vasquez

# ANNULAR ECLIPSE

A Partial Annular Eclipse will be occurring in Marfa on the morning of the race!

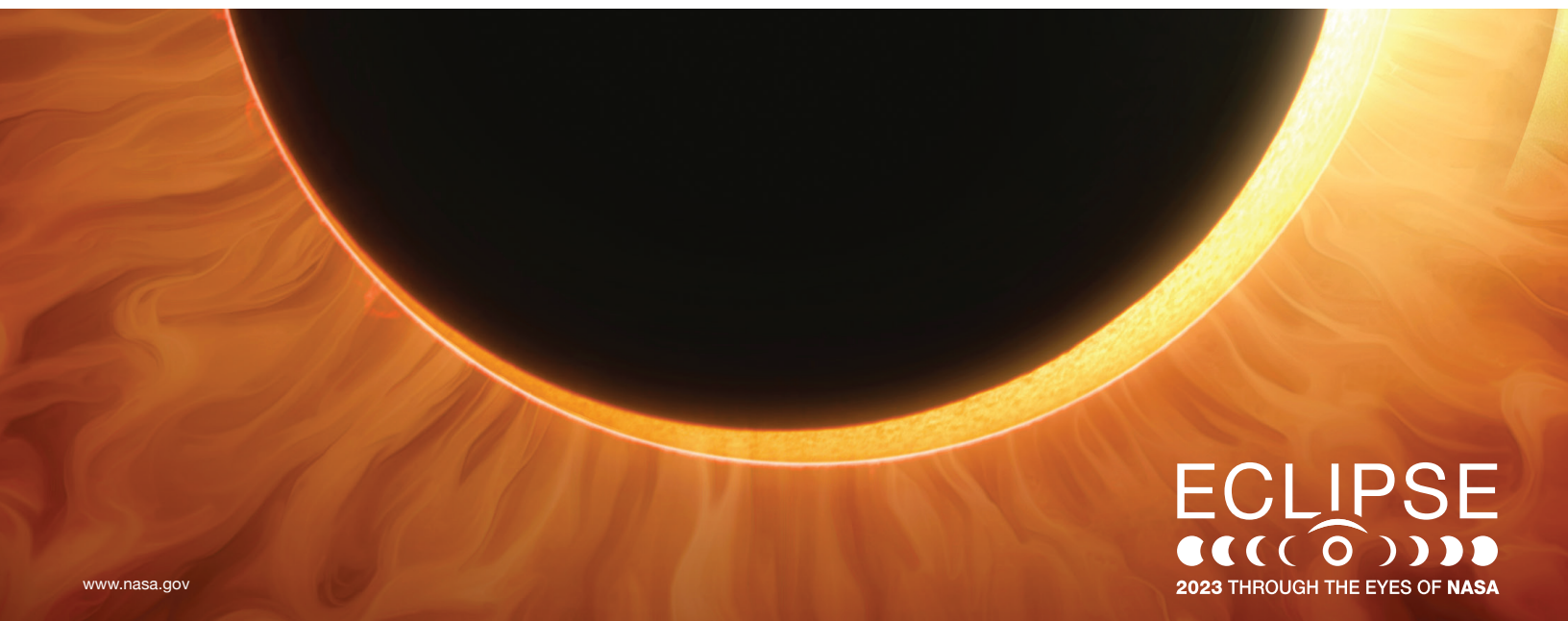
**ECLIPSE TIME: 9:20am - 12:20pm, peak at 10:44am**

## THE ECLIPSE IN MARFA

- In Marfa, we will have a **partial eclipse**, with 86% obscuration (the amount that the moon will cover the sun)
- It is an **Annular Eclipse**, so the moon will appear a bit smaller in front of the sun, revealing a “ring of fire” around the edges
- The light will be “weird” but not as dark as a total eclipse
- For more eclipse info:  
<https://science.nasa.gov/eclipses/future-eclipses/eclipse-2023/>

## SAFETY

- When viewing the eclipse **YOU MUST WEAR APPROPRIATE EYE PROTECTION**
- There are NASA approved solar eclipse viewing glasses in your SWAG bag. If you stop to view the eclipse, please use these glasses!
- Before using your glasses, make sure the lens is intact and is not scratched
- For more info about safe eclipse viewing: <https://eclipse.aas.org/eye-safety>



www.nasa.gov

ECLIPSE  
●●●●○●●●●  
2023 THROUGH THE EYES OF NASA

## WHAT TO BRING

- Bike with tubeless tires or sealant-filled tubes (look up *Tribulus Terrestris* ie. goatheads)
- CPSC approved helmet
- Sun protection
- 2-3 water bottles
- Spare tubes, basic toolkit, pump or inflation system
- Snacks
- Eclipse viewing glasses (you have some in your SWAG bag)
- Rain gear if applicable (weather changes quickly in West Texas)
- Special winning attitude!



Photo by Sarah Vasquez



## AFTER THE RIDE

### POST RACE PARTY

- Catering & drinks by Convenience West
- Marfa100 Merch booth
- Marfa Burrito jersey raffle
- Snow Marfa shaved ice
- Massage by Mallory Jones

Age Category Awards for **1st, 2nd, & 3rd** Place

### AFTER PARTY

Head to Planet Marfa for music by Colette Haines



Photo by Sarah Vasquez

## LOCAL FRIENDS, VENDORS & SPONSORS

Bordo  
Cactus Liquors  
Little Juice  
Mira Marfa

*\*check your swag bag for coupons  
from these local businesses!*

Convenience West  
Joe Crow Coffee  
Kristal Cuevas, yoga  
Mallory Jones, massage  
Snow Marfa shaved ice

Athletic Brewing  
MUNK Bars  
Stan's Sealant  
Wildway Granola  
El Cosmico



Photo by Sarah Vasquez